

Des Plaines River Watershed Planning & Project Implementation

Lake Co. Stormwater Management Commission

**DRWW General Membership Meeting
February 11, 2016**

Projects & Planning

SMC awarded an IL EPA Section 319 grant with 3 elements:

1. Implement 3 water quality BMP projects
2. Pilot 2 Small Watershed Assessment and Action Plans (SWAAPs)
3. Develop umbrella watershed-based plan for Des Plaines watershed in Lake County



Water Quality BMP Projects

1. Mundelein Park District: Bull Creek and Community Park pond restoration - Bull Creek-Brook Watershed
2. College of Lake County: parking lot bioswales - Mill Creek Watershed
3. Lake County Forest Preserves Agricultural BMPs in 4 farm fields - North Mill Creek-Dutch Gap Canal Watershed



SWAAP Pilot

- SMC will select 2 study areas and begin assessment and project planning in spring 2016
- Strategic planning will target lakesheds or smaller drainage areas (ideally < 5 sq. mi.)
- Outcome will be detailed field assessments & conceptual plans and budgets for in-the-ground BMP projects
- SMC will soon solicit stakeholder interest (Mike Novotney is project manager)



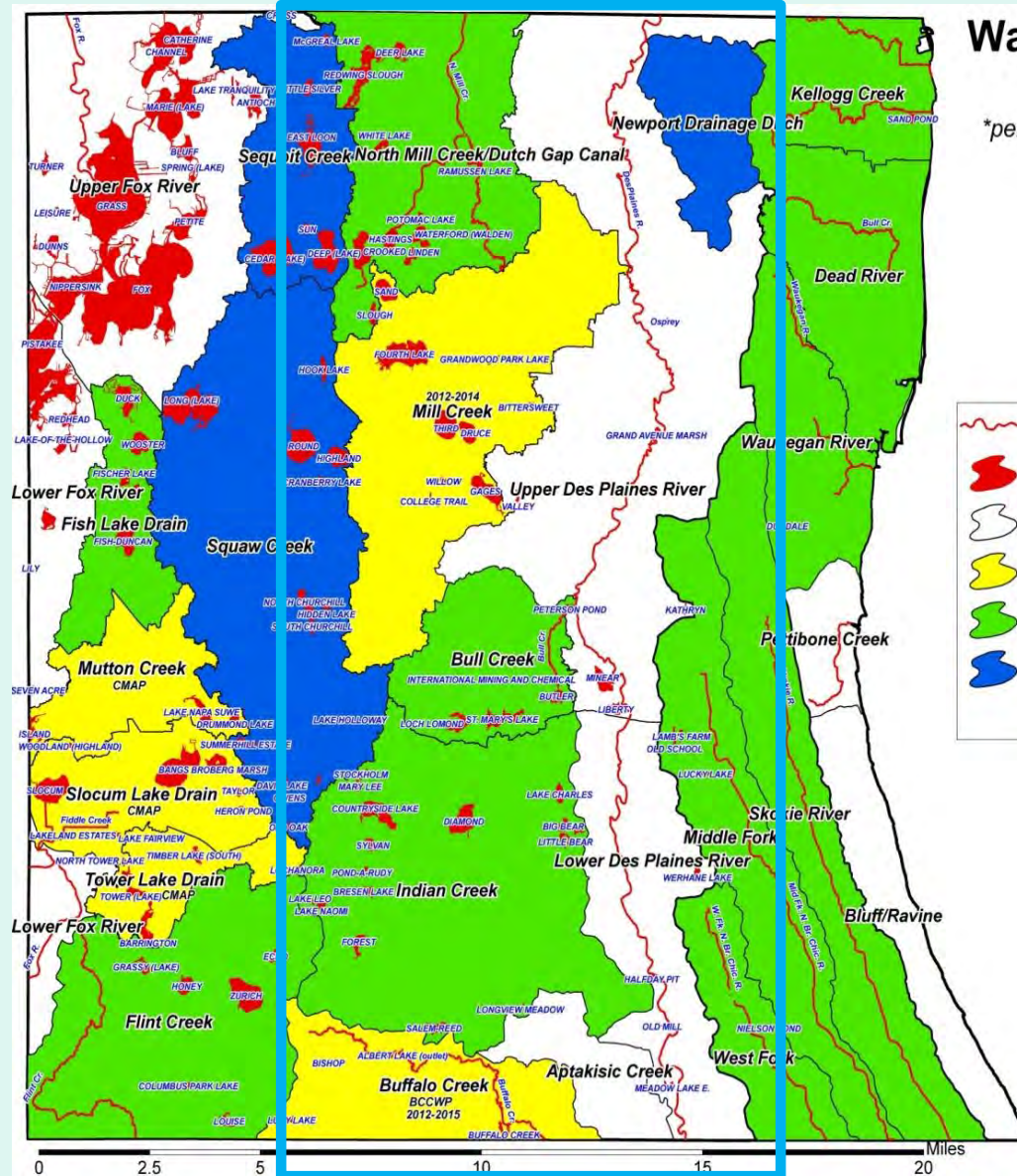
Umbrella Watershed Plan

Update existing plans:

1. North Mill Creek
2. Mill Creek
3. Bull Creek/Brook
4. Indian Creek
5. Buffalo Creek

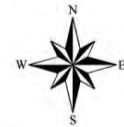
Complete plans for:

6. Upper Des Plaines
7. Newport Ditch
8. Lower Des Plaines
9. Aptakisic Creek



Watershed-Based Plan Status*

*per sub-watershed as of March 2014
including Illinois EPA 2012
303(d) Impaired Waters.

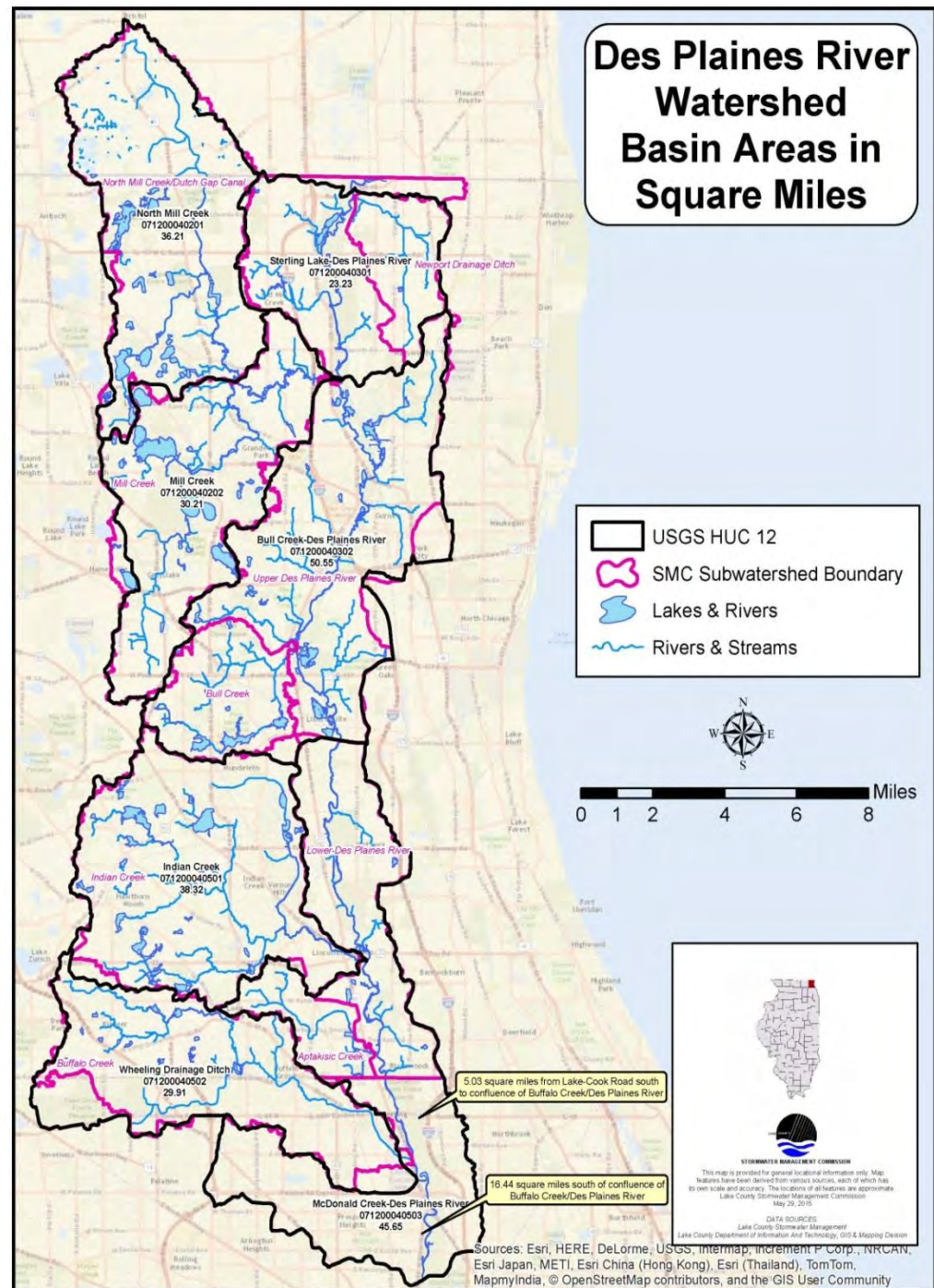


- 303D Listed Streams
- 303D Listed Lakes
- No Watershed-Based Plan
- Watershed-Based Plan: In Progress
- Watershed-Based Plan: Complete
- Watershed Plan Complete (Not Watershed-Based Plan)



Watershed Plan

- Planning area
- Planning period: 2016-2018
- Will meet US EPA Watershed-Based Plan requirements





Major Plan Elements

- Watershed Issues, Opportunities, Goals and Objectives, Vision
- Watershed Characterization
 - Compiling existing information about the watershed
 - Collecting new data (stream and detention basin inventories, lake assessments, water quality data, flood problem areas update)
- Watershed Problems Assessment
- Action Plan Recommendations
- Evaluating Plan Implementation – Assess Performance/Success
- Education and Outreach Plan

Major Stakeholders

MS4s

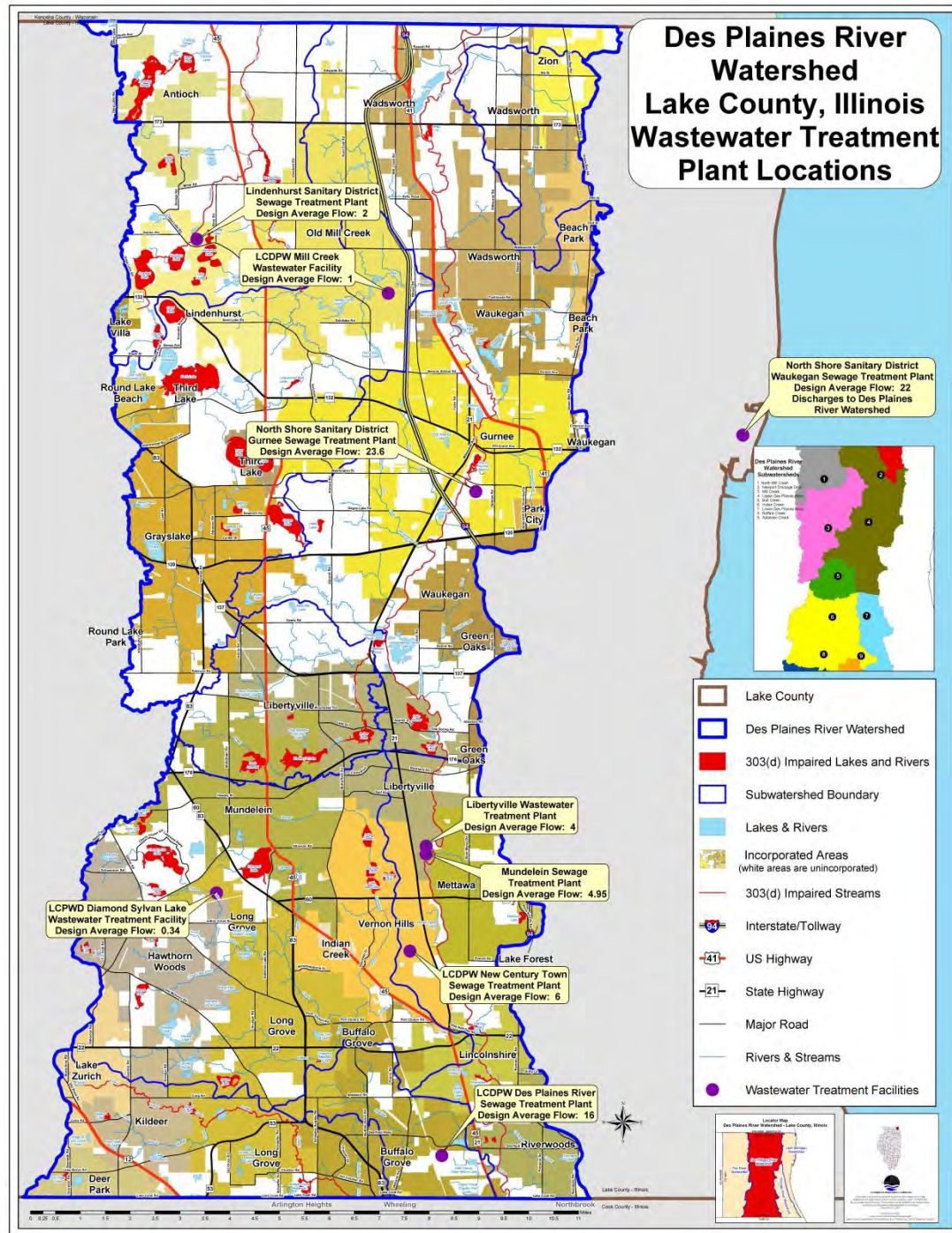
- 33 municipalities
- 12 townships
- 2 drainage districts

POTWs

- 8 public wastewater treatment plants that discharge 80 MGD

Forest Preserve District

Des Plaines River Watershed Lake County, Illinois Wastewater Treatment Plant Locations



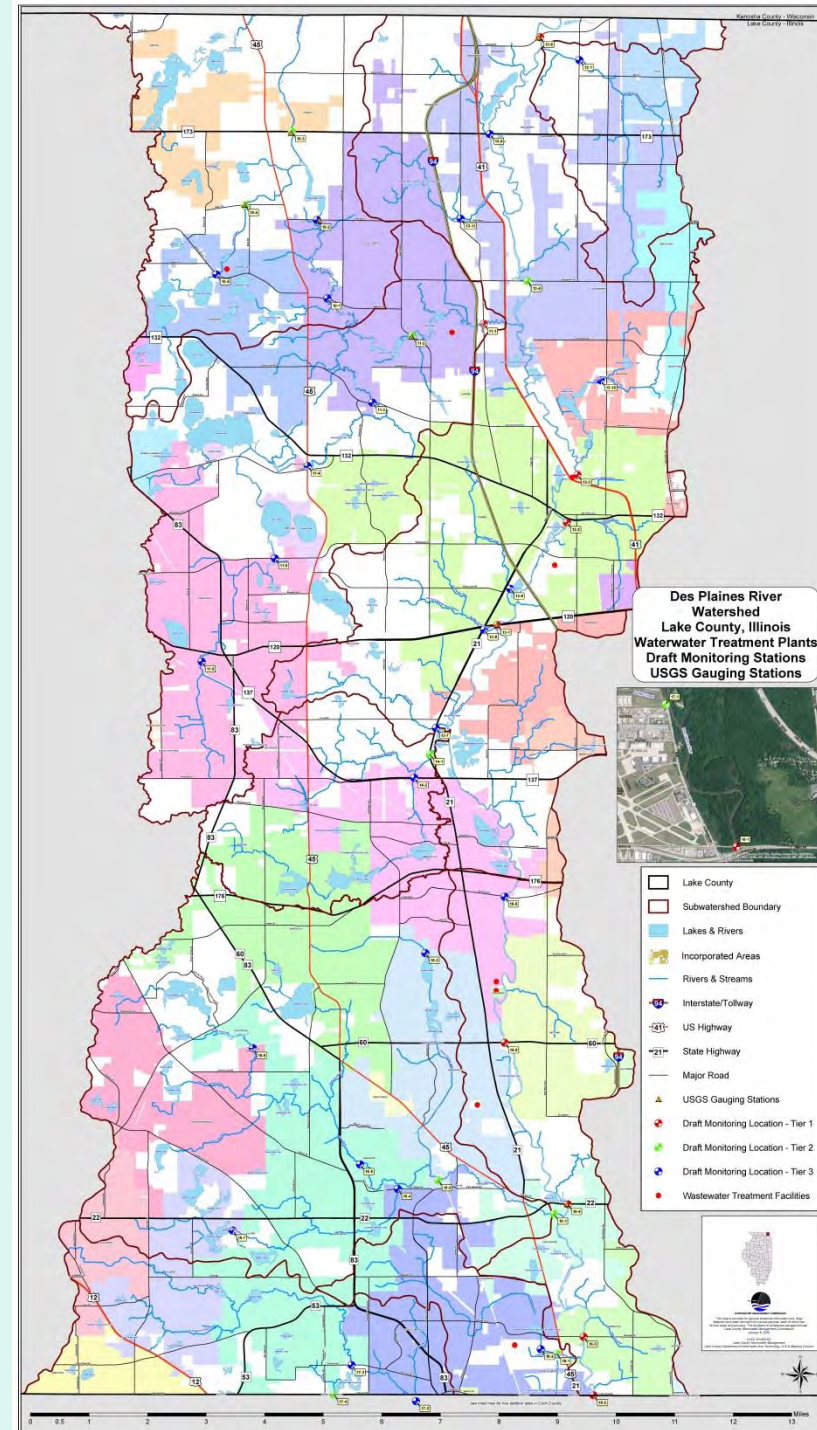


Planning Process & Status

- Stakeholder-guided plan - 20 meetings planned over 2 years
 - 8 general meetings with full watershed group
 - 12 topic/group-targeted meetings
- Kick-off meetings scheduled for March 17, 2016
 - Mailed invitations to riparian landowners, flood problem area residents
 - Emailed invitations to communities and organizations in SMC database
- DRWW meeting in August 2016
 - Feature watershed plan & project update
- Data compilation and collection is underway
 - Includes DRWW monitoring data
 - Includes stream, lake shoreline, detention basin inventories

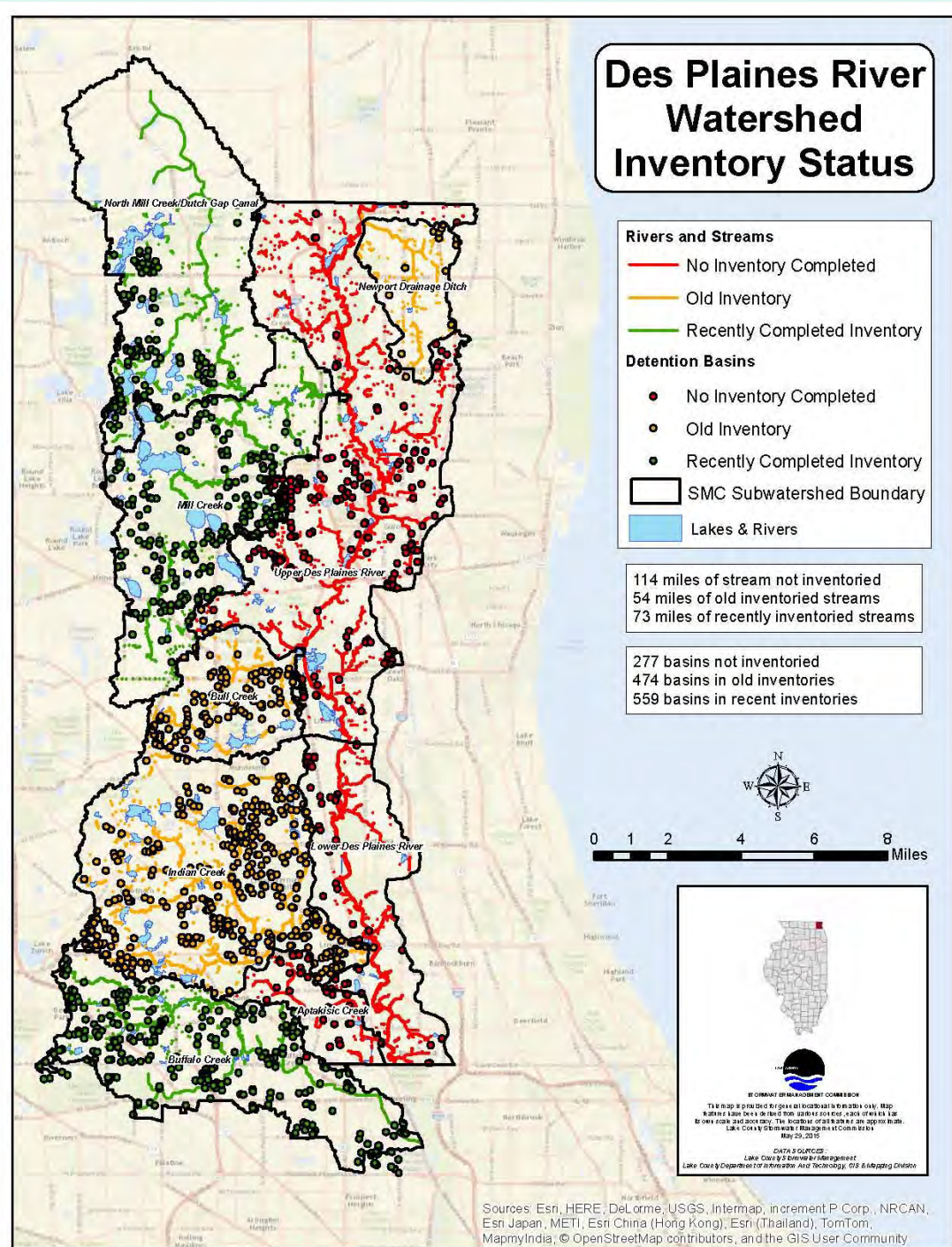
Watershed Plan & DRWW Monitoring

- DRWW monitoring efforts began in 2015
- Water & sediment chemistry, habitat, biological assessment
- Watershed plan surface water quality assessment based on DRWW monitoring data from 2015-2017



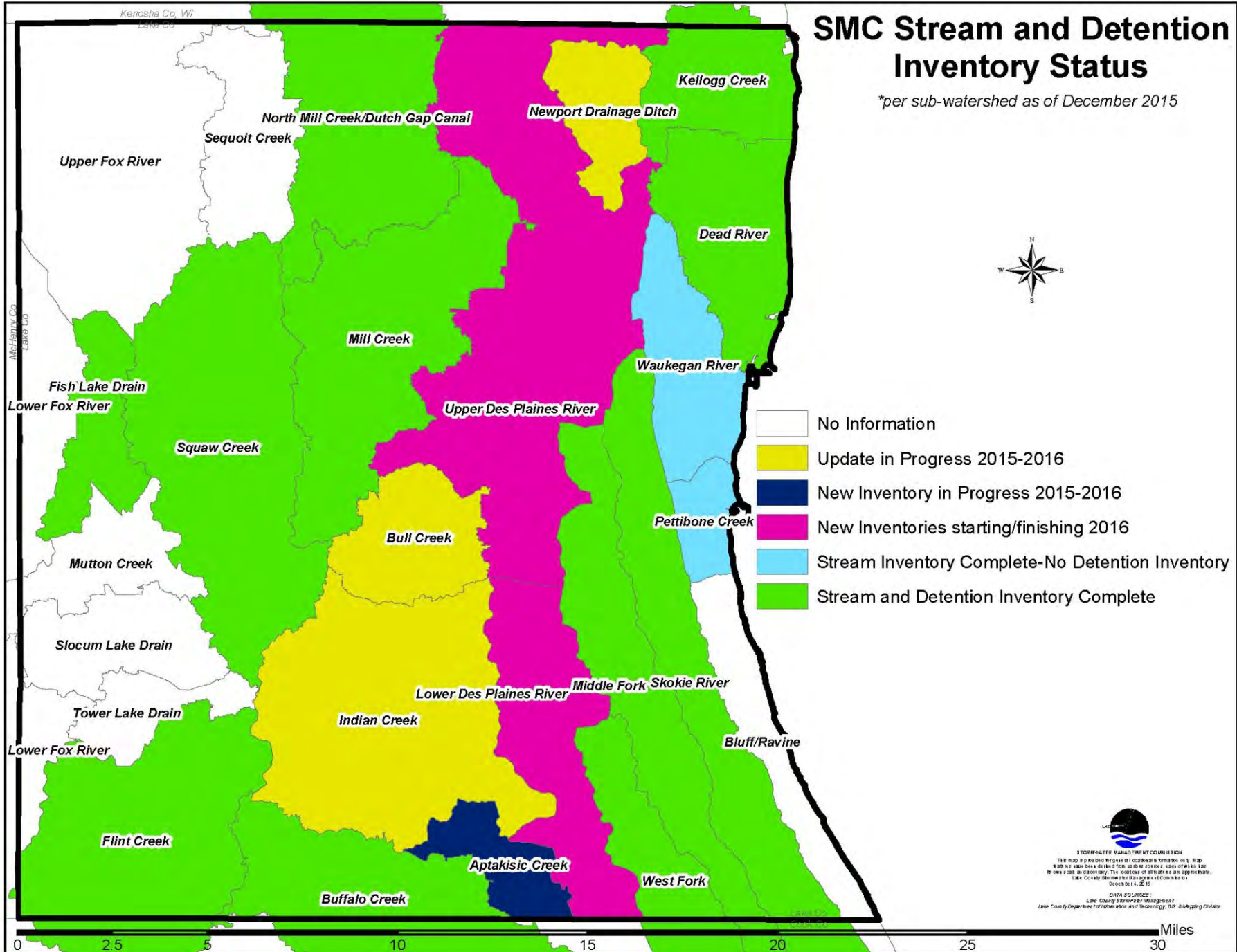
Inventories Underway

- Stream
- River
- Detention basins
- Lake shorelines
- Flood problem areas (online survey)



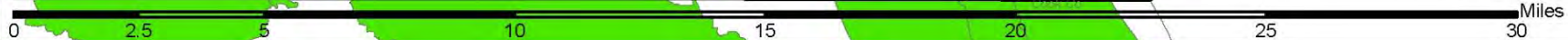
SMC Stream and Detention Inventory Status


*per sub-watershed as of December 2015



- No Information
- Update in Progress 2015-2016
- New Inventory in Progress 2015-2016
- New Inventories starting/finishing 2016
- Stream Inventory Complete-No Detention Inventory
- Stream and Detention Inventory Complete


STORMWATER MANAGEMENT COMMISSION
 This map is prepared by the LWC staff in cooperation with the LWC staff. It is not intended to be used for any other purpose. The location of all features are approximate. LWC staff shall not be held responsible for any errors or omissions. December 14, 2015.
 DATA SOURCES:
 LWC County Stormwater Management
 Lake County Department of Information and Technology, GIS & Mapping Division





Mark Your Calendar to Attend a Kickoff Meeting on March 17th!

MEETING INVITATION – SEE HANDOUTS

QUESTIONS/MORE INFORMATION

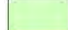


- Patty Werner pwerner@lakecountyil.gov
- Ashley Warren awarren@lakecountyil.gov

NPS Activities and Section 319 Funding Priorities - FFY 2017

Application Deadline - August 1, 2016

- IEPA 319 Funding Priorities
- FFY2017
- Des Plaines for Implementation

FFY 2017 Priority Watersheds

-  Planning
-  Implementation
-  Watershed Boundaries



Illinois EPA
Bureau of Water
Watershed Management Section
Nonpoint Source Unit
Davis - February 2013

| WID | Watershed Name | HUC_8 |
|-----|-------------------------------------|----------|
| 1 | Apple River/Plum River | 0706005 |
| 2 | Pecatorica River | 0709003 |
| 3 | Lake Michigan Tributaries | 0404002 |
| 4 | Des Plaines River | 0712004 |
| 5 | Upper Fox River | 0712006 |
| 6 | Sugar River | 0709004 |
| 7 | Kishwaukee River | 0709006 |
| 8 | Upper Rock River | 0709002 |
| 9 | Lower Rock River | 0709005 |
| 10 | Chicago/Little Calumet | 0712003 |
| 11 | Mississippi North | 07080101 |
| 12 | Lower Fox River | 0712007 |
| 13 | Green River | 0709007 |
| 14 | Calumet River | 0404001 |
| 15 | Upper Illinois River (DS of Fox R.) | 0713001 |
| 16 | Upper Illinois R. (US of Fox R.) | 0712005 |
| 17 | Kankakee River | 0712001 |
| 18 | Mississippi North Central | 07080104 |
| 19 | Spoon River | 0713005 |
| 20 | Vermilion (Illinois River) | 0713002 |
| 21 | Iroquois River | 0712002 |
| 22 | Middle Illinois River | 0713003 |
| 23 | Mackinaw River | 0713004 |
| 24 | La Moine River | 0713010 |
| 25 | Vermilion (Wabash) | 05120109 |
| 26 | Upper Sangamon River | 0713006 |
| 27 | Salt Creek | 0713009 |
| 28 | Bear Creek | 0711001 |
| 29 | Lower Sangamon River | 0713008 |
| 30 | Upper Kaskaskia River | 0714021 |
| 31 | Embarras River | 05120112 |
| 32 | Lower Illinois River | 0713011 |
| 33 | Little Vermilion (Wabash) | 05120108 |
| 34 | Mississippi Central | 07110004 |
| 35 | Middle Wabash Tributaries | 05120111 |
| 36 | South Fork Sangamon R. | 0713007 |
| 37 | Maccoupin Creek | 0713012 |
| 38 | Little Wabash | 05120114 |
| 39 | Shoal Creek | 0714023 |
| 40 | Middle Kaskaskia River | 0714022 |
| 41 | Mississippi South Central | 07140101 |
| 42 | Wood River/Piasa Creek | 07110009 |
| 43 | Lower Kaskaskia River | 0714024 |
| 44 | Skillet Fork | 05120115 |
| 45 | Lower Wabash | 05120113 |
| 45 | Lower Wabash | 05140202 |
| 46 | Big Muddy River | 0714016 |
| 47 | Mississippi South | 0714015 |

