

# **Des Plaines River Watershed Workgroup**

**Des Plaines River**  
Watershed Workgroup



# Today

1. Introductions and Announcements
2. Current Status and Temporal Changes in Fish Assemblages and Stream Quality in the Des Plaines River – Steve Pescitelli
3. An Overview of the DRWW Comprehensive Monitoring Program – Joe Robinson
4. DRWW Business

# **Des Plaines River Watershed Workgroup: DRAFT Monitoring Plan**

**Joe Robinson**  
Director of Laboratory Services  
North Shore Water Reclamation District  
DRWW Monitoring Committee Chair

**Des Plaines River Watershed Workgroup Meeting**  
**February 12, 2015**

**Des Plaines River**  
Watershed Workgroup



# Today

- Goals of the monitoring program
- Budget
- Overview of the monitoring program
- Monitoring stations
- Water and sediment chemistry parameters and sampling regime
- Bioassessment

# Goals of the Monitoring Program

- Establish baseline data, then measure progress by monitoring biological assemblages, water column and sediment chemistry, and habitat. Further identify water quality impairments and solutions to those problems.
- Assist NPDES permittees in meeting permit requirements
  - MS4s
  - POTWs



## Budget

- ~\$225,000 in dues, collected annually
  - \$50,000 for administration
  - \$175,000 for monitoring
- Monitoring costs split in half for both programs, additional money for analysis and reporting:
  - Bioassessment and habitat: \$75,000
  - Water column and sediment chemistry: \$75,000
  - Analysis and reporting: \$25,000
- RFPs for all contracts

# Monitoring Program Overview

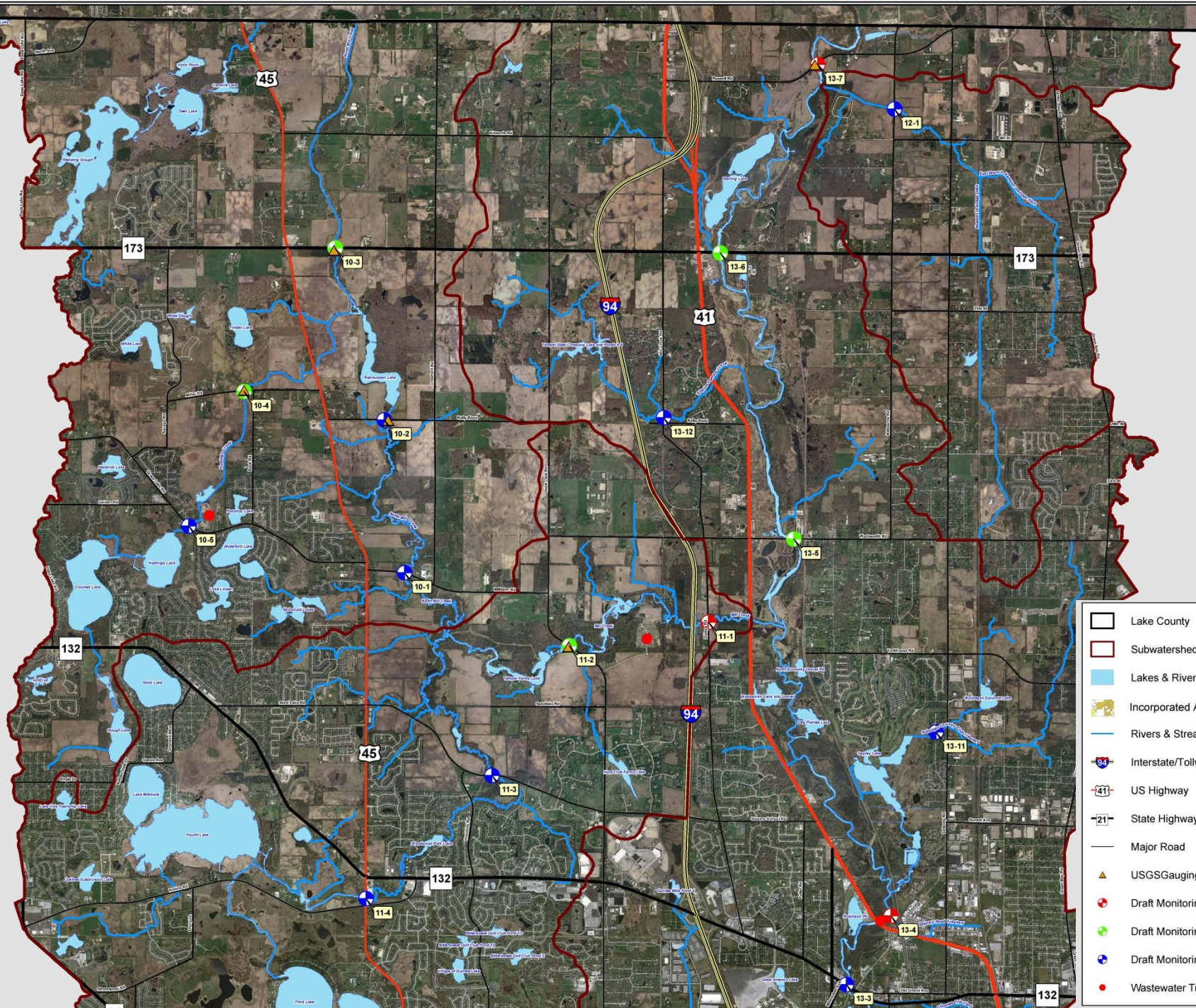
- **Bioassessment**
  - Two assemblages: fish and macroinvertebrates
  - Habitat (QHEI)
  - Rotating basis – completed every fourth year, or do  $\frac{1}{4}$  of the watershed per year
- **Water and Sediment Chemistry Monitoring**
  - Tiered site design
  - Demand, Metals, Nutrients, Bacteria, Water Organics, Sediment Metals, Sediment Organics, and Instream Continuous Monitoring



# Monitoring Stations

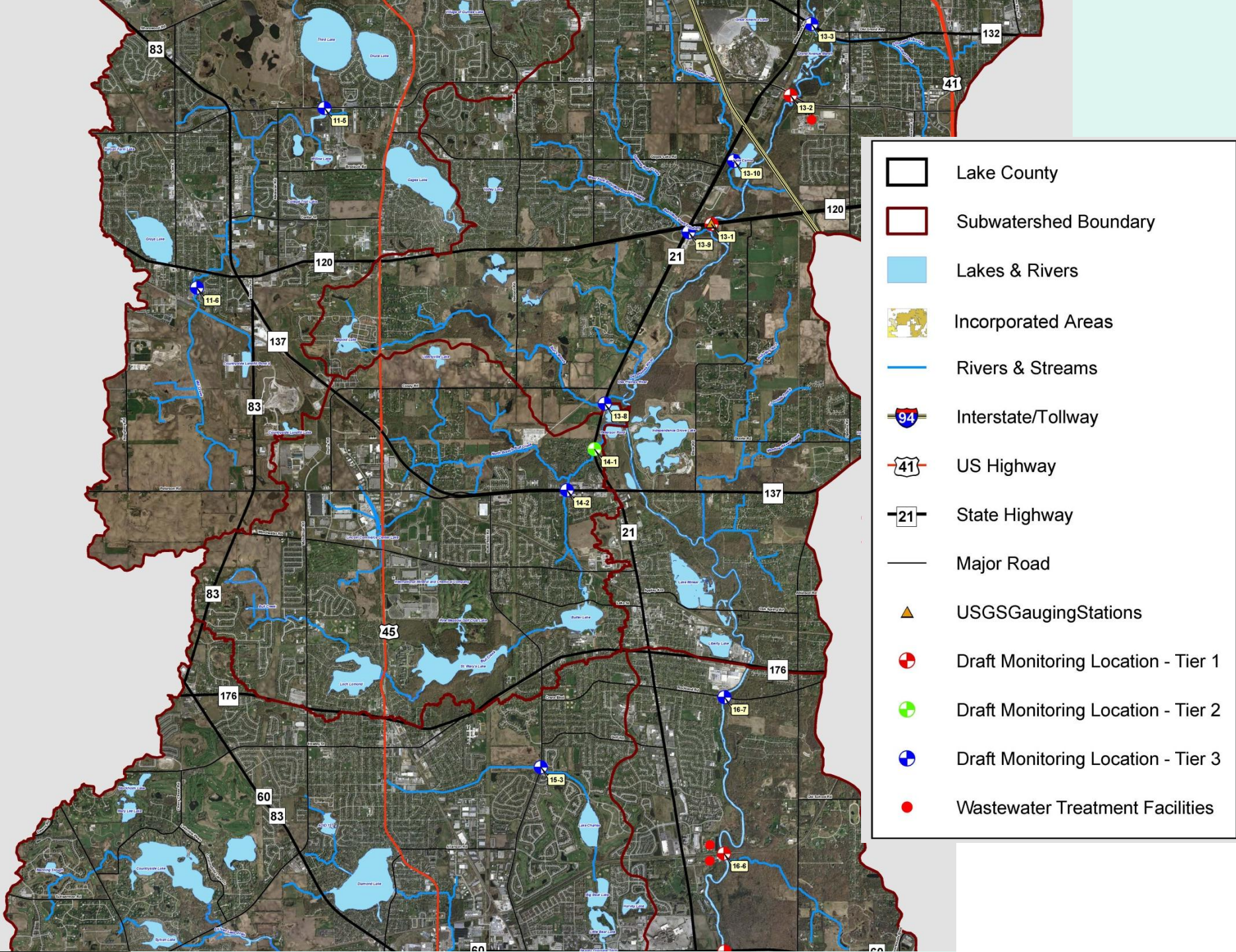
- Comprehensive, tiered site design
  - Tier 1: 11 sites
  - Tier 2: 11 sites
  - Tier 3: 24 sites
- Organized by subwatershed:
  - North Mill 10
  - Mill 11
  - Newport 12
  - Upper 13
  - Bull 14
  - Indian 15
  - Lower 16
  - Buffalo 17
  - Apatakisisic 18



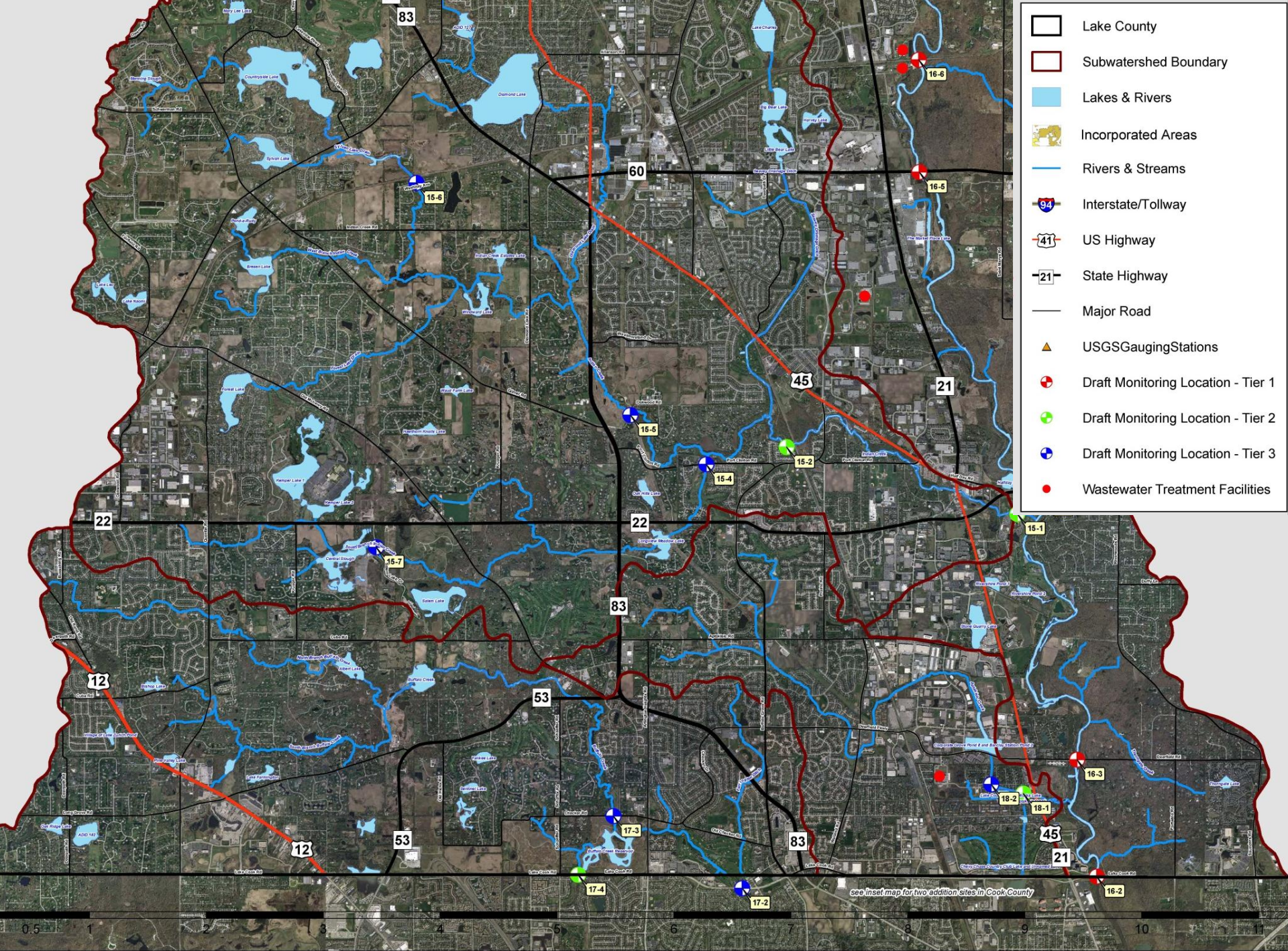


- Lake County
- Subwatershed Boundary
- Lakes & Rivers
- Incorporated Areas
- Rivers & Streams
- Interstate/Tollway
- US Highway
- State Highway
- Major Road
- USGSGaugingStations
- Draft Monitoring Location - Tier 1
- Draft Monitoring Location - Tier 2
- Draft Monitoring Location - Tier 3
- Wastewater Treatment Facilities







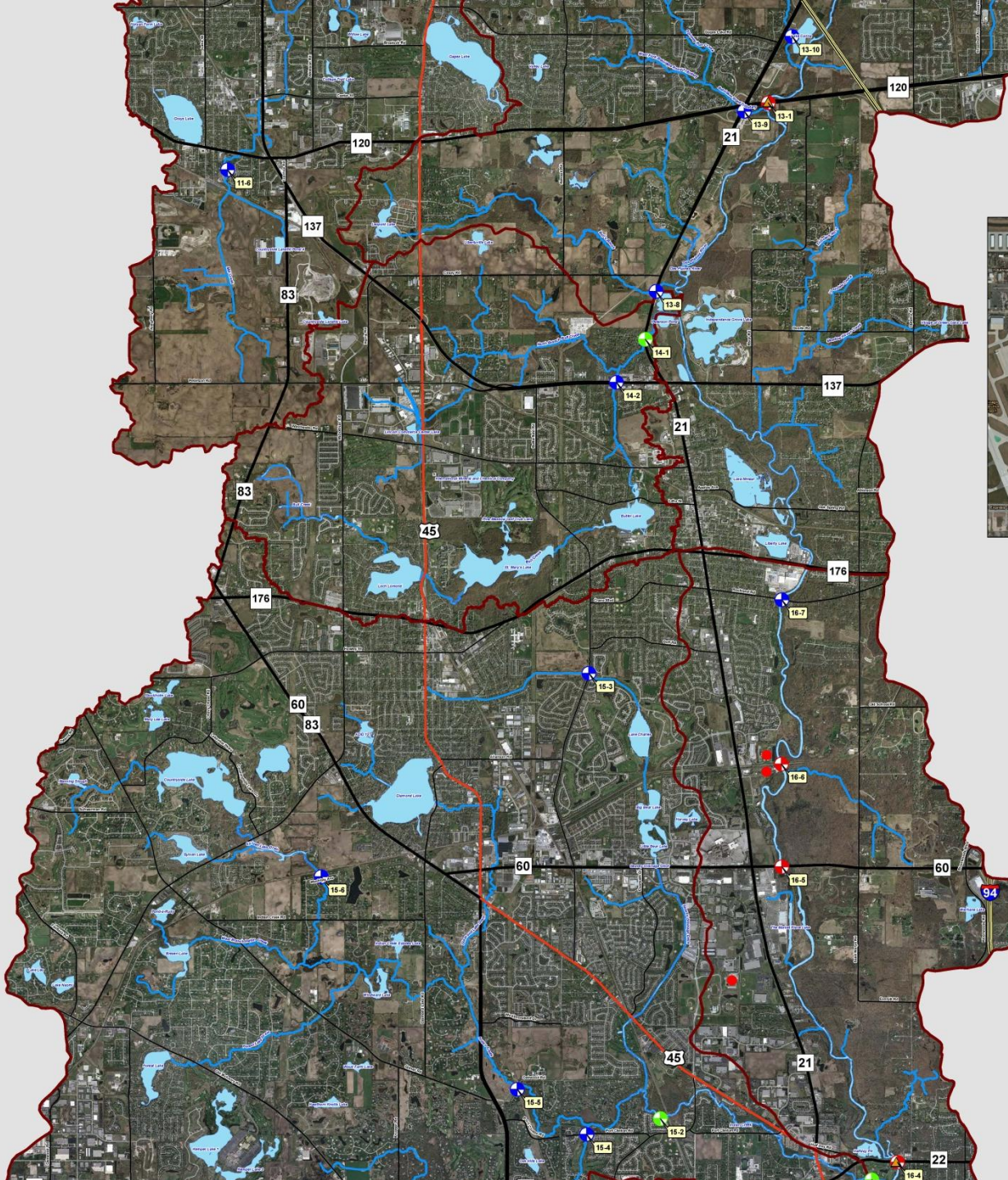


- Lake County
- Subwatershed Boundary
- Lakes & Rivers
- Incorporated Areas
- Rivers & Streams
- Interstate/Tollway
- US Highway
- State Highway
- Major Road
- USGSGaugingStations
- Draft Monitoring Location - Tier 1
- Draft Monitoring Location - Tier 2
- Draft Monitoring Location - Tier 3
- Wastewater Treatment Facilities

see inset map for two additional sites in Cook County



# Des Plaines River Watershed Lake County, Illinois Water Treatment Plants Draft Monitoring Stations USGS Gauging Stations



- Lake County
- Subwatershed Boundary
- Lakes & Rivers
- Incorporated Areas
- Rivers & Streams
- Interstate/Tollway
- US Highway
- State Highway
- Major Road
- USGS Gauging Stations
- Draft Monitoring Location - Tier 1
- Draft Monitoring Location - Tier 2
- Draft Monitoring Location - Tier 3
- Wastewater Treatment Facilities



## Monitoring Committee

Joe Robinson, Chair, NSWRD

Austin McFarlane, Lake County Public Works

Mike Adam, Lake County Health Department

Steve Vella, Libertyville

Rob Flood, NSWRD

Jim Bland, Sierra Club

**Des Plaines River**

Watershed Workgroup

